

HumaStar 300SR

Plug & run system solution – it has never been so simple!

- › Perfect matching of hardware, software, reagents and controls for maximum performance
- › Intuitive and powerful, designed for easy and efficient operation
- › Comprehensive assay selection, fully validated and „Made in Germany“



Human

Diagnostics Worldwide

HumaStar 300SR

Random access system for medium-sized laboratories

Eco-friendly ProClean 2.0 Technology

- › Minimal carry-over with a dual solution wash station
- › Low water consumption – less than 3 l/h
- › Separation and reduction of biohazard waste



HumaStar 300SR

REF 16930

Medium throughput random access system

- › Up to 300 tests per hour
- › 60 positions for samples and solutions
- › 40 cooled positions for reagents and solutions
- › Convenient sample and reagent management with barcode reader for samples and reagents
- › Uninterrupted operation with continuous programming and loading
- › Flexibility through three open channels for user-defined methods
- › Efficient data management with bi-directional LIS
- › Multi-language software: English, French, Spanish, Additional languages can be added
- › Reliable performance ensured by included UPS

Intuitive and powerful software

- › Offers an enhanced user experience, designed for intuitive touchscreen interaction
- › Ensures accountability with full traceability of reagents, calibrations, users, and settings
- › Provides easy access to information through a searchable results database
- › Maintains consistent accuracy with onboard calibration and stability monitoring
- › Features automatic outlier detection and unit conversion for enhanced data integrity
- › Optimized performance through method-specific wash options, ensuring precise results

Worldwide proven reliability. Used in over 50 countries.



Private clinic Kuca Zdravlja laboratory Humalab, Serbia

“Since January 2019, we have been using the HumaStar 300SR. It is very precise and accurate. We use the HumaStar 300SR analyzer extensively and are impressed with the quality of both the instrument and the reagents. The interaction between the system’s reagents and the instrument is perfectly harmonized.”

Dr. Jelica Vucovic - Head of the laboratory



Video

Customer focused reagent concept

- › Simplifies operations with plug-and-run reagents, for immediate use
- › Ensures highest quality results with fully validated assay settings
- › Meets various throughput needs with two kit sizes
- › Offers enduring reliability with up to 56 days of reagent onboard stability and prefilled, barcoded reagent bottles
- › Compatible with HumaStar 300SR and HumaStar 600

Consistent quality “Made in Germany”

In Magdeburg, Germany we produce our reagents in accordance with the latest quality standards, guaranteeing consistent quality at the highest level.

Designed for easy and efficient operation

- › Advanced multi-step reaction cuvette wash station guarantees flawless reaction conditions
- › Pre and post-dilution processes enhance efficiency for extended walk-away time
- › Bottle cap holder to prevent mix-ups and save time
- › Maintenance is quick, user-friendly, and service-efficient



HumaStar 300SR

Comprehensive assay selection “Made in Germany”

Immune Status

anti-Streptolysin-O,
Complement C3 and C4, CRP,
Immunoglobulins IgA, IgG, IgM

Liver Panel

Albumin, Alkaline Phosphatase,
Bilirubin Total and Direct,
Cholinesterase, gamma-GT,
GOT (ASAT), GPT (ALAT),
Total Protein

Kidney Panel

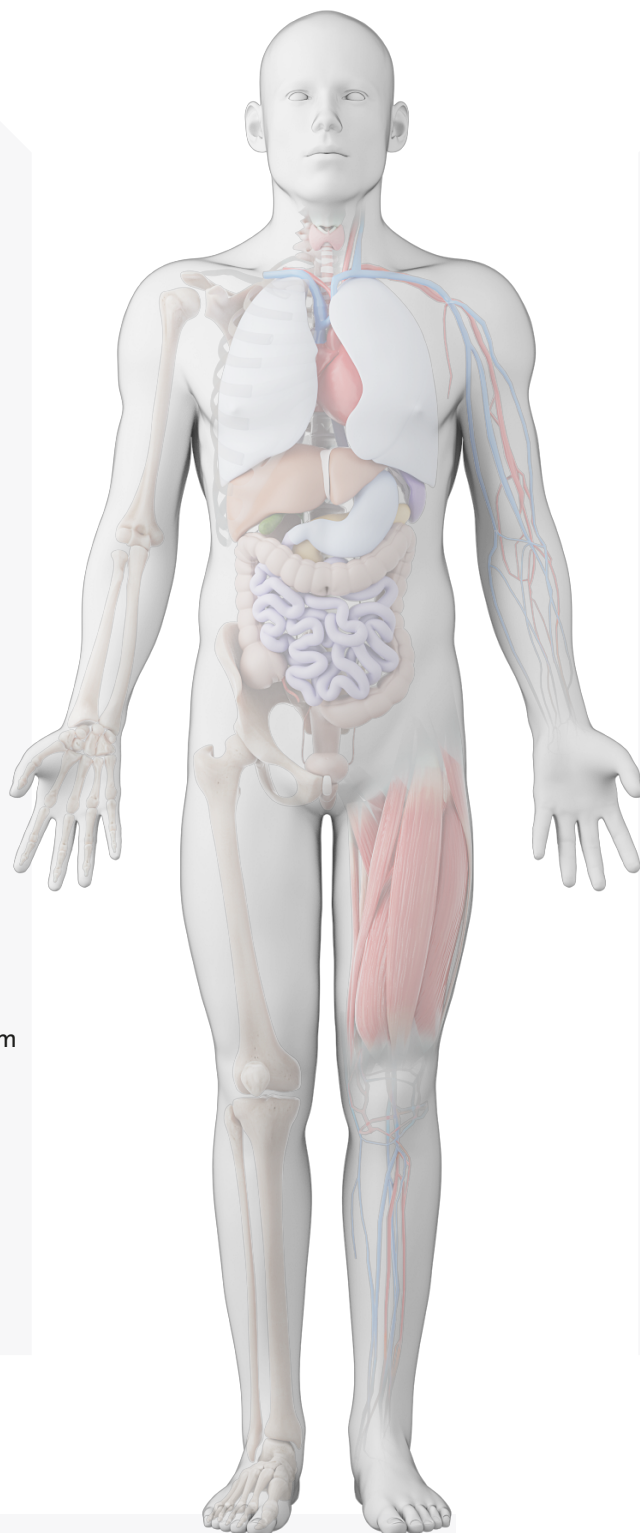
Calcium, Creatinine,
Inorganic Phosphorus,
Magnesium, Microalbumin,
Potassium, Sodium, Urea/BUN,
Uric Acid, Urinary Total Protein

Bone Metabolism

Alkaline Phosphatase, Calcium,
Inorganic Phosphorus, Magnesium

Rheumatic Diseases

anti-Streptolysin-O,
Complement C3 and C4, CRP,
Rheumatoid Factors



Arteriosclerosis

Cardiac Risk Assessment

Cholesterol, HDL-/LDL-Cholesterol,
Triglycerides

Cardiac Panel

CK-NAC, CK-MB, GOT (ASAT),
GPT (ALAT), LDH

Pancreatic Tests

alpha-Amylase, Lipase,
Pancreatic Amylase

Diabetes

Glucose, HbA1c, Microalbumin,
Triglycerides, Urinary Total Protein

Anemia

Iron,
Total Iron Binding Capacity,
Transferrin

Water & Electrolyte Balance

Albumin, Chloride, Potassium,
Sodium, Total Protein



Find out more available reagent kits and
wash solutions on our website or in our catalog.



HUMAN Gesellschaft für Biochemica und Diagnostica mbH
Max-Planck-Ring 21 · 65205 Wiesbaden · Germany
Tel. +49 6122-9988-0 · Fax +49 6122-9988-100 · e-mail: human@human.de · www.human.de



Human

Diagnostics Worldwide