

# Laboratory Line

Perfectly Equipped for Every Challenge

- > Robust and maintenance-free
- > Precise and reliable
- > Easy and safe to handle

## LABORATORY EQUIPMENT



Movie

**Human**

Diagnostics Worldwide

CoreLab DX

# Clinical Centrifuges

## High flexibility and safe pretreatment of your samples

- > Reliable and maintenance-free
- > Low noise level



### HuMax 14K REF

High-speed benchtop centrifuge

230 VAC 17160

> Rotors included

none

> Rotor types and speed

Fixed-angle rotor: 14,000 rpm 17163

Fixed-angle rotor: 4,100 rpm 17162

Swing-out rotor: 4,100 rpm 17161

> RCF

Fixed-angle rotor 18,407 xg 17163

Fixed-angle rotor 3,007 xg 17162

Swing-out rotor 3,045 xg 17161

> Maximum capacity

Fixed-angle rotor

24 x 200-800 µl, 24 x 1.5/2 ml 17163

Fixed-angle rotor

30 x 1.5/2/5/7 ml, 15 x 15 ml conical,

4 x 100 ml 17162

Swing-out rotor

28 x 5/7 ml, 12 x 15 ml conical,

28 x 15 ml conical, 4 x 100/200 ml 17161

### HuMax 5K REF

Medium capacity benchtop centrifuge

230 VAC 15300/2

110 VAC 15300/1

> Rotors included

none

> Rotor types and speed

Fixed-angle rotor: 4,100 rpm 15301P

Fixed-angle rotor: 4,100 rpm 15302P

Swing-out rotor: 4,100 rpm 15301

Swing-out MTP rotor: 4,100 rpm 15303

> RCF

Fixed-angle rotor 2,450 xg 15301P

Fixed-angle rotor 2,142 xg 15302P

Swing-out rotor 2,819 xg 15301

Swing-out MTP rotor 2,011 xg 15303

> Maximum capacity

Fixed-angle rotor

30 x 1.5/2/5/7 ml 15301P

Fixed-angle rotor

16 x 1.5/2/5/7 ml 15302P

Swing-out rotor

4 x 5/7/100 ml, 2 x 15 ml conical,

4 x 15 ml 15301

Swing-out microtiter plate rotor

2 x MTP 15303

### HuMax 4K REF

Small capacity benchtop centrifuge

230 VAC 15200/2

110 VAC 15200/1

> Rotors included

Fixed-angle rotor

> Rotor types and speed

Fixed-angle rotor (incl.): 5,000 rpm

> RCF

Fixed-angle rotor 2,822 xg

> Maximum capacity

Fixed-angle rotor

12 x 1.5/2/5/7 ml, 12 x 15 ml conical



### HuMax 3K

REF

Small capacity benchtop centrifuge

110-230 VAC 15450

> **Rotors included**

Fixed-angle rotor

> **Rotor types and speed**

Fixed-angle rotor (incl.): 4,500 rpm

> **RCF**

Fixed-angle rotor 2,490 x g 15302P

> **Maximum capacity**

Fixed-angle rotor

12 x 10 ml, 8 x 15 ml conical 15302P



24 hematocrit determinations in 5 minutes

### HuMax HCT

REF

Hematocrit/microliter benchtop centrifuge

230 VAC 15500

110 VAC 15500/110

> **Rotors included**

Hematocrit rotor

> **Rotor types and speed**

Hematocrit rotor (incl.): 12,000 rpm

Fixed-angle rotor: 14,000 rpm

> **RCF**

Fixed-angle rotor 18,624 x g 15502

Hematocrit rotor 13,620 x g 15501

> **Maximum capacity**

Fixed-angle rotor

24 x 1.5/2 ml 15502

Hematocrit rotor

24 x capillary 15501

> **Capillary**

Micro-Hematocrit tubes

Non-Hep. 749321

Na-Hep. 749311

Hematocrit sealing compound

(10 plates) 749510



Ideal for quick spin downs of micro and PCR tubes

### HuMax Micro

REF

Micro benchtop centrifuge

110-230 VAC EU plug 15150

110-230 VAC US plug 15150/110

> **Rotors included**

Fixed-angle rotor/PCR rotor

> **Rotor types and speed**

Fixed-angle rotor (incl.): 7,000 rpm

PCR rotor (incl.): 7,000 rpm

> **RCF**

Fixed-angle rotor 18,624 x g 15150/10

PCR rotor 13,620 x g 15150/11

> **Maximum capacity**

Fixed-angle rotor

8 x 1.5/2 ml 15150/10

PCR rotor

16 x 200–800 µl 15150/11

# Incubators

## Achieve temperature uniformity

- > Maintenance-free
- > Easy-to-use



### HumaCube

REF

Incubator for round tubes

220 VAC	17050
110 VAC	17070

- > 20 positions of Ø 13 mm
- > 4 positions of Ø 15 mm
- > Temperature ranges:  
25 °C, 30 °C, 37 °C, 45 °C
- > Digital display for temperature
- > Reliable accuracy and uniformity of temperature

### HumAqua 5\*

REF

Unstirred waterbath (cover not incl.)

220 VAC	17180/2
110 VAC	17180/1

- > Tank volume: 6 litres
- > Useful volume: 4 litres
- > Temperature range: ambient + 5...99.9 °C
- > Digital display for temperature and time
- > Programmable microprocessor controlled system
- > Up to 8 GB of external memory for temperature data logging

#### Accessories for HumAqua 5

Plexiglass cover (resists up to 60 °C)	17180/10
Stainless steel cover	17180/11
Rack for 52 tubes 13x70 mm	17180/12
Rack for 30 tubes 16x70 mm	17180/13
Rack for 27 tubes 18x70 mm	17180/14
Rack for 12 tubes 30x70 mm	17180/15

### HumaTherm\*

REF

Incubator

220 VAC	17195
110 VAC	17195/110

- > Internal volume: 22 litres
- > Temperature range: ambient + 5...80 °C
- > Digital display for temperature and time
- > Safety thermostat
- > Programmable PID microprocessor control system
- > Up to 8 GB of external memory for temperature data logging

\* New design available soon

# Mixers

## Individual and flexible



### HumaTwist

REF

<b>Vortex mixer</b>	pin plug	
230 VAC/50 Hz	EU 2	17175
230 VAC/60 Hz	UK 3	17176
110 VAC/50 Hz	US 3	17177
110 VAC/60 Hz	US 3	17178

- > Continuous and touch operation
- > Adjustable speed 0-2,500 rpm
- > Reduced vibration by special designed silicone absorber
- > Steel base with ultra high vibration damping
- > Various adapters for different applications

#### Accessories for HumaTwist

100 mm plate attachment with rubber pad	17175/5
48 test tubes 6 mm	17175/6*
18 test tubes 10 mm	17175/7*
12 test tubes 12 mm	17175/8*
8 test tubes 16 mm	17175/9*
8 test tubes 20 mm	17175/10*
Rack for 12 tubes 30x70 mm	17180/15

\* 100 mm plate attachment with rubber pad necessary

### HumaRoll

REF

<b>Horizontal benchtop tube roller</b>	
110-230 VAC	15460

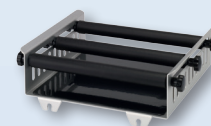
- > Continuous operation
- > Adjustable speed range 0-70 rpm
- > Horizontal tilt and roll motion (amplitude 24 mm)
- > Large capacity: 6 rolls with 280 mm length
- > Universal power connector (IEC-60320C13)

### HumaRock

REF

<b>Benchtop rocking shaker</b>	
110-230 VAC	14570

- > Tilt angle  $\pm 7^\circ$
- > Speed range 0-80 rpm
- > Variety of plates
- > Delivered without attachment
- > Universal plug EU, UK, US included



#### Accessories for HumaRock

Universal attachment (3 bars)	14570/10
Lengthways roller attachment	14570/12
Dish attachment with non-slip mat	14570/13
Bar universal attachment black	14570/14
Workplate line immuno assay	14570/20
Large size dish attachment with non-slip mat	14570/35

# Liquid Handling

## Maximum precision for reliable results

### HumaPette PREMIUM Line

Highest quality Made in Germany

- > Maximum versatility and excellent quality
- > Proven performance

#### Features

- > One hand operation for right and left handed
- > Fully autoclavable (20 min. at 121°C)
- > Volume adjustment protection
- > Tool-free easy calibration technique
- > Corrosion-resistant piston and ejector
- > Color-coded volume range



Fixed volume	REF
10 µl	19505P
20 µl	19510P
25 µl	19515P
50 µl	19520P
100 µl	19525P
200 µl	19530P
250 µl	19535P
500 µl	19540P
1,000 µl	19545P

Digital and adjustable	REF
0.5-10 µl	19110P
2-20 µl	19120P
10-100 µl	19125P
20-200 µl	19130P
100-1,000 µl	19140P
500-5,000 µl	19150P
1,000-10,000 µl	19160P



HumaPette-8 Channel	REF
Perfect tool for all ELISA microtiter assays	
5-50 µl	19320P
30-300 µl	19330P



Premium Starter kit	REF
Containing 3 digital and adjustable pipettes of different volumes with corresponding racked crystal, yellow and blue pipette tips and rack mounts	
0.5-10 µl	19110P
10-100 µl	19125P
100-1,000 µl	19140P

## HumaPette SMART Line

Superior price/performance ratio

- > Ergonomical and accurate

### Features

- > Convenient plunger position
- > Low force to push plunger
- > Easy set and read display
- > Feedback from button operation
- > Simple calibration



Fixed volume	REF
5 µl	19500L
10 µl	19505L
20 µl	19510L
25 µl	19515L
50 µl	19520L
100 µl	19525L
200 µl	19530L
250 µl	19535L
500 µl	19540L
1,000 µl	19545L

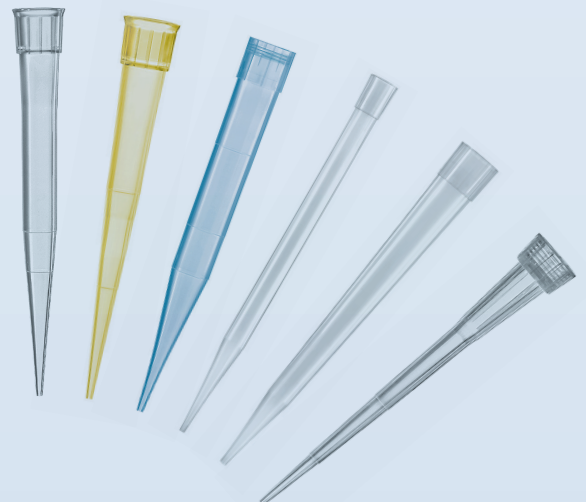
Digital and adjustable	REF
0.5-10 µl	19110L
5-50 µl	19120L
10-100 µl	19125L
20-200 µl	19130L
100-1,000 µl	19140L
1,000-5,000 µl	19150L

## Pipette Tips for all types of HumaPettes

"1-way" tips to avoid contamination				REF
crystal	0.5-20 µl	1,000 pcs		19320/20
yellow	2-200 µl	10,000 pcs		19910/20
blue	50-1,000 µl	5,000 pcs		19920/40
white	0.5-5 ml	200 pcs		19150/10
white	1.0-10 ml	1,000 pcs		19160/10

### For HumaPette-8

HumaPette-8	5-300 µl	1,000 pcs	19320/10
-------------	----------	-----------	----------



# Water Purification

**Cost-effective solution for constant water quality**



## HumaPure

REF

**Ion exchange system with single use cartridge  
for most convenient handling**

230 / 110 VAC \_\_\_\_\_ 15140

**HumaPure SET with prefilter set**

230 / 110 VAC \_\_\_\_\_ 15142

- > Constant water quality
- > Capacity: 450 l  
at 10° total salinity and conductivity limit of 20  $\mu\text{S}/\text{cm}$
- > Flow rate: 65 l/h
- > Measuring range: 0-30  $\mu\text{S}/\text{cm}$
- > LED measuring device
- > Included: device, tubing, filter cartridge

### Accessories for HumaPure

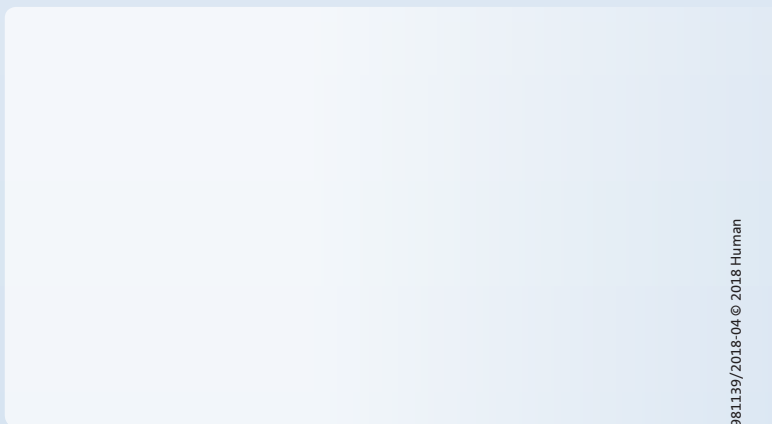
Prefilter set (prefilter housing, prefilter, tube set) \_\_\_\_\_ 15141

### Consumables for HumaPure

Cartridge \_\_\_\_\_ 15140/10

Spare prefilter (2 pcs) \_\_\_\_\_ 15141/10

Your local distribution partner



981139/2018-04 © 2018 Human

